

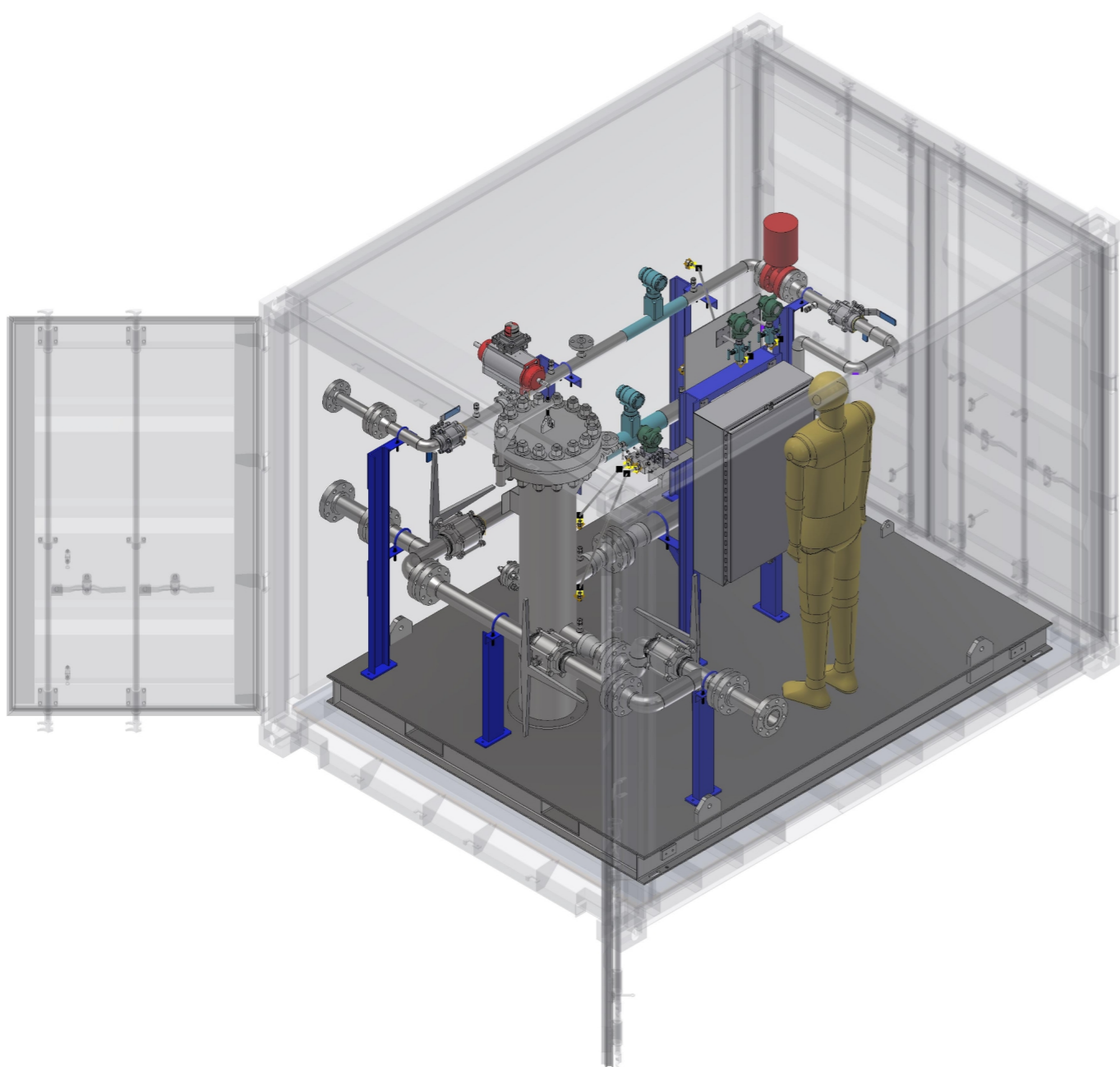
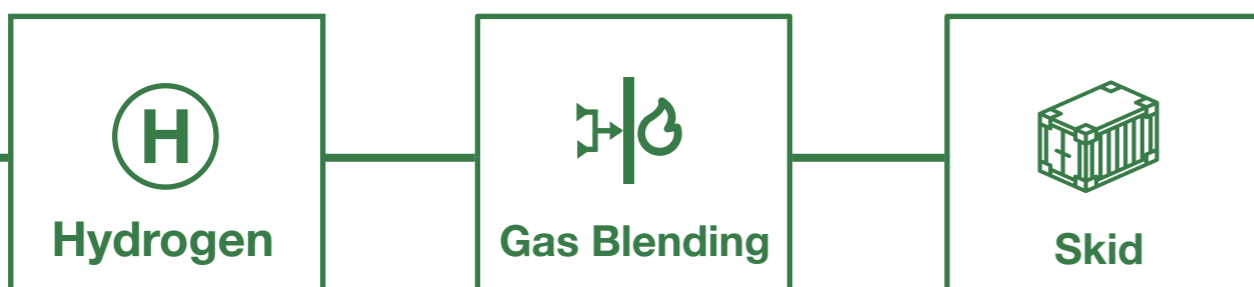


# H-Cubed™

Blending Hydrogen into your fuel gas stream can be an effective means to decarbonize your process.

CRDX combines our field proven Hydrogen Gas Blending System, capable of blending 0%-30+% by volume from a single process train, with the flexibility to integrate with a variety of Hydrogen sources.

The containerized system is the plug and play Hydrogen-Fuel blending solution that enables you to seamlessly integrate into your existing process train.



**OVERALL DIMENSIONS:**

- Length = 118 in [2991 mm]
- Width = 96 in [2438 mm]
- Height = 96 in [2438 mm]
- Clearance For Door Swing = 48 in [1219 mm]

**UNIT WEIGHT:**

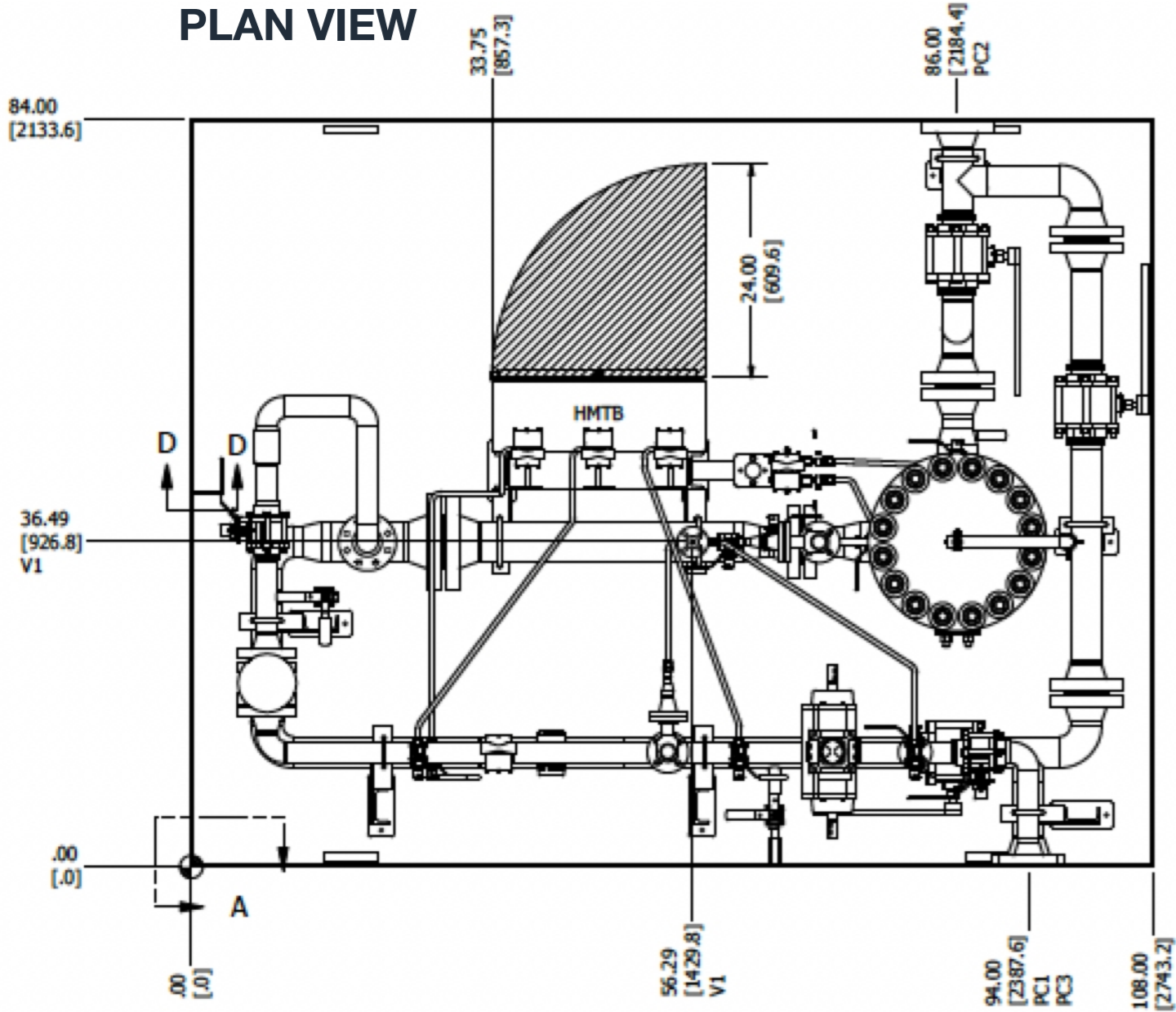
- Skid Weight = 5000 lb [2268 kg]
- Container Weight = 3500 lb [1588 kg]
- Overall Weight = 8500 lb [3856 kg]

**FOUNDATION REQUIREMENT:**

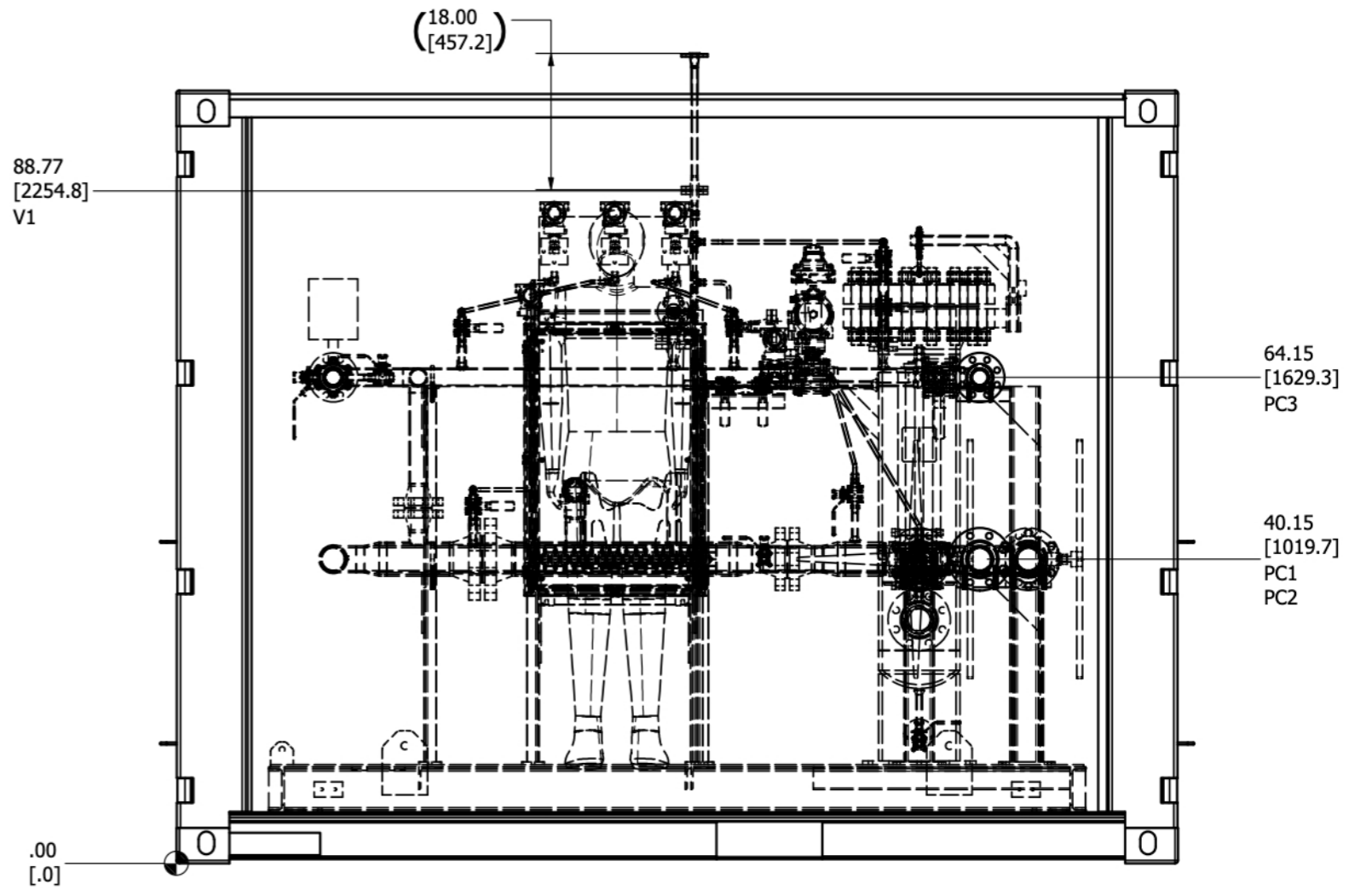
The module shall be mounted on a properly designed and level concrete base or pad.

The module shall be installed in accordance with all local codes and standards.

**PLAN VIEW**



**ELEVATION VIEW**



**POWER REQUIREMENTS:**

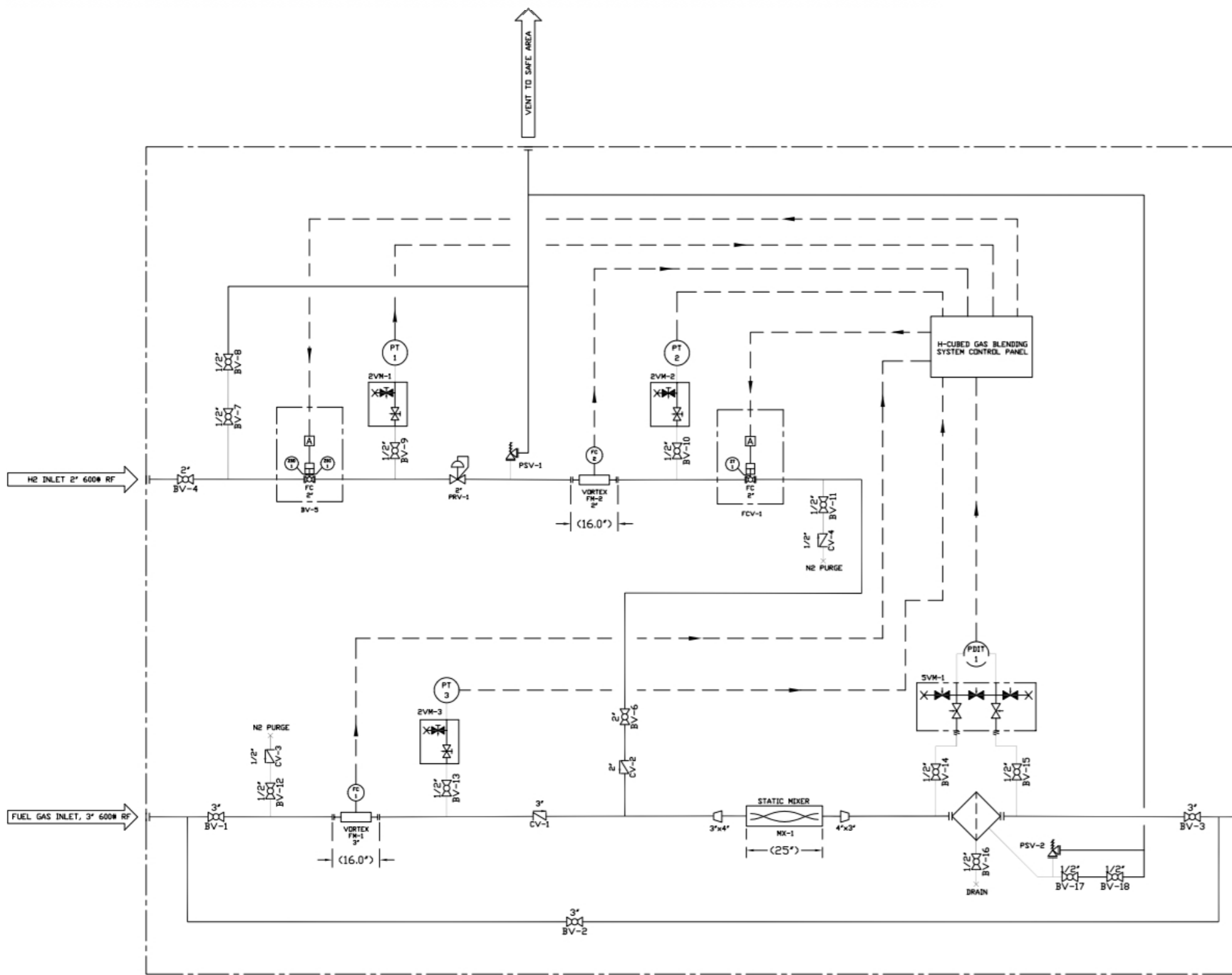
2.4kVA @ 120/240VAC, 50/60Hz

**INPUTS FROM CUSTOMER:**

- E-stop Request, Digital Input
- Remote Start, Digital Input
- Remote Stop, Digital Input
- LEL Alarm Acknowledge Digital Input
- H2 / Natural Gas % Request, 4-20ma

**OUTPUTS TO CUSTOMER:**

- General Alarm, Digital Output
- E-Stop Status, Digital Output
- H2 Stop Valve Open, Digital Output
- H2 Stop Valve Closed, Digital Output
- LEL Alarm, Digital Output
- Filter Dirty, Digital Output
- H2 Pressure, 4-20mA
- H2 Temperature, 4-20mA
- Natural Gas Flow, 4-20mA
- Natural Gas Pressure, 4-20mA
- Natural Gas Temperature, 4-20mA
- LEL Alarm, 4-20mA (optional)
- H2 Flow, 4-20mA



**PLANT INSTALLER INTERFACE TABLE**

INTERFACE	CONNECTION SIZE	CONNECTION TYPE	DESCRIPTION	MATERIAL
PC1	3.0 [76.2]	RFWN 600LB	FG INLET	A182 F304/304L
PC2	3.0 [76.2]	RFWN 600LB	FG OUTLET	A182 F304/304L
PC3	2.0 [50.8]	RFWN 600LB	H2 INLET	A182 F304/304L
V1	0.5 [12.7]	RFWN 150LB	VENT	A182 F304/304L